

## **Procedure to reset Master code ART.2410 (code lock) in case of loss of the "MASTER CODE"**

The master code is used to program the user codes A and B. The code lock Master Code should be reset back to the factory set code of 1234.

For security reasons the MASTER CODE may be programmed again with a different code.

If the code is lost, it is possible to program it again by following this procedure.

**NB. There are two models of keypads MK 1 & MK 2.  
MK1**

### **MK 1 (*diagram 2410/01*)**

- Disconnect the supply and remove keypad from the entrance panel by removing the metal strap/clip with 2 self - tapping screws.
- Unscrew the 4 fixing points of the keypad (rear of unit)
- Remove the keypad membrane keeping flat cable connected.
- Unscrew the 2 screws which fasten the printed circuit board and remove printed circuit board.
- Make a short circuit between the 2 spots of the printed circuit as indicated on the diagram (2410/01)
- Apply power to the keypad and with the short circuit still in place follow the following procedure -

**\*\* 1234 \*\* 1234 \***

## **Please note the following**

**If 3 "beeps" will occur at the end of the above sequence the reprogramming has been successful.**

## **However**

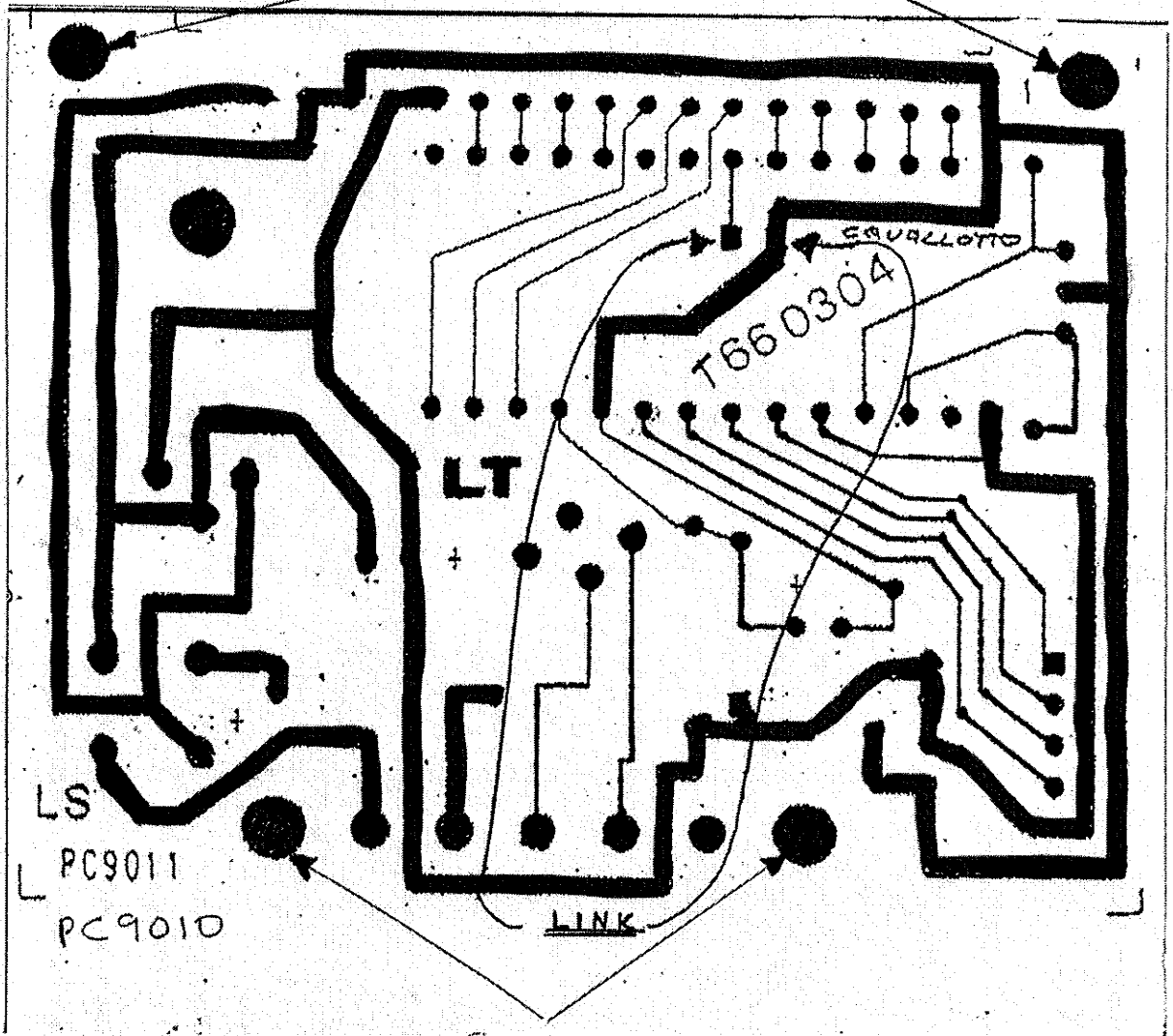
**If one continuous 3 second beep is heard after \*\*1234 \* ensure you have a good short circuit connection between the 2 points of the printed circuit board.**

- **Disconnect the supply to the keypad, remove the short circuit and reassemble the unit.**

## **Differences between MK1 & MK2**

- 1. MK1 keys are flat and do not appear to press in.**
- 2. MK 2 keys protrude and buttons can physically be pressed in.**
- 3. MK 1 aluminium face is secured by 4 cross headed black screws from the rear.**
- 4. MK 2 aluminium face is a pressed on fit secured by 4 lugs around each side.**
- 5. There is a difference in the printed circuit board layout (consult diagrams 2410/01 & /02).**

BRASS SPACERS

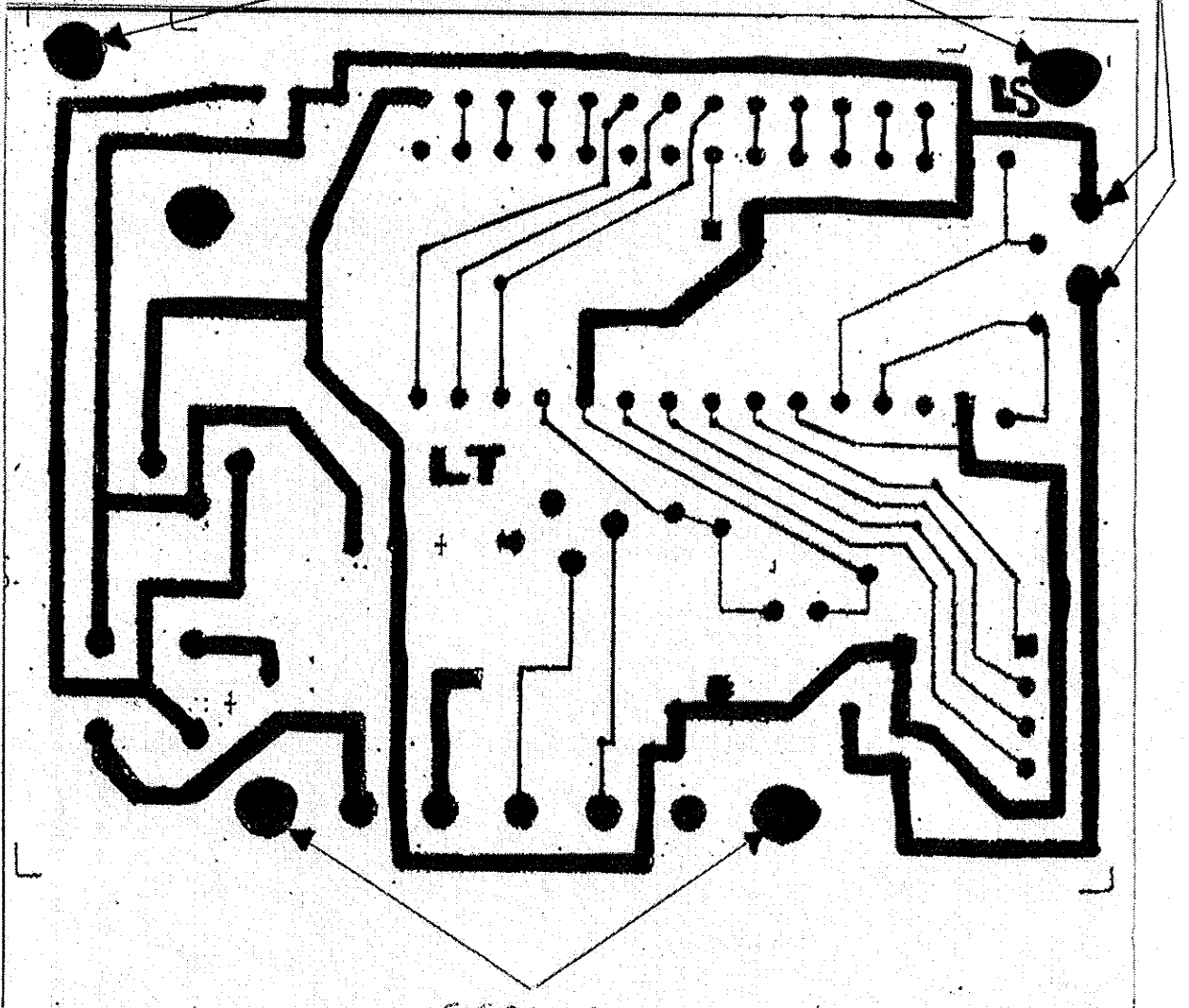


SCREWS

MK I

LINK THE TWO SOLDER SPOTS

BRASS SPACERS



SCREWS

MK 2

## **Procedure to reset Master code ART.2410 (code lock) in case of loss of the "MASTER CODE"**

The master code is used to program the user codes A and B. The code lock Master Code should be reset back to the factory set code of 1234.

For security reasons the MASTER CODE may be programmed again with a different code.

If the code is lost, it is possible to program it again by following this procedure.

**NB. There are two models of keypads MK 1 & MK 2.  
MK1**

### **MK 2 (*diagram 2410/02*)**

- Disconnect the supply and remove keypad from the entrance panel by removing the metal strap/clip with 2 self - tapping screws.
- Remove keypad aluminium face which is fastened at 4 points by using a flat bladed screwdriver.
- Remove the keypad membrane keeping flat cable connected.
- Unscrew the 2 screws that fasten the printed circuit board and remove printed circuit board.
- Make a short circuit between the 2 spots of the printed circuit as indicated on the diagram (2410/02).
- Apply power to the keypad and with the short circuit still in place follow the following procedure -

**\*\* 1234 \*\* 1234 \***

**Please note the following**

If 3 "beeps" will occur at the end of the above sequence the reprogramming has been successful.

**However**

If one continuous 3 second beep is heard after **\*\*1234 \*** ensure you have a good short circuit connection between the 2 points of the printed circuit board.

- Disconnect the supply to the keypad, remove the short circuit and reassemble the unit.